

# **Bamboo** Aroma-Diffuser

WELLBEING AT THE PUSH OF A BUTTON



## O2C18:

**A** FE>; 395

**B** S@5399 1 391

**C** I>001 <1 391

**D** ) 4B1 21

**E** R9505>95@B? 2<5= ?F



Tento elegantný elektrický difúzer z bambusového dreva a bieleho skla s LED osvetlením a terapeutickou hmlou sa stane fascinujúcim doplnkom v hociktovej izbe Vášho domova.

**&451 <I `@B5`1B? = 1D5B1 @E**

Difúzer nezahrieva ani nespáli esenciálne oleje, takže nestrácajú nič zo svojich vzácnych látok.

**Ideal>I `@B5`JF <835>95`FJ 4E 38E**

Aroma difúzer môžete používať s esenciálnymi olejmi alebo len s vodou. Tým efektívne a ekologicky zvlhčíte ozdušie vo Vašom domove.

Vďaka technológii ultrasonic sa zmes vody a esenciálnych olejov zmení na jemnú hmlu, ktorá sa rozptýli do vzduchu. Tým sa vzduch aj čistí a zaisť zdravší domov pre Vašu rodinu.



S@5399 1 391

>1J?F @B 4E; DE: Aroma DiZ nYf  
F5< ?CD ø 185 mm, J 165 mm  
>1@1DE: 100~240V/50~60Hz  
FI ; ?>: 12 W  
?2:5= `>14?2I : 120 ml

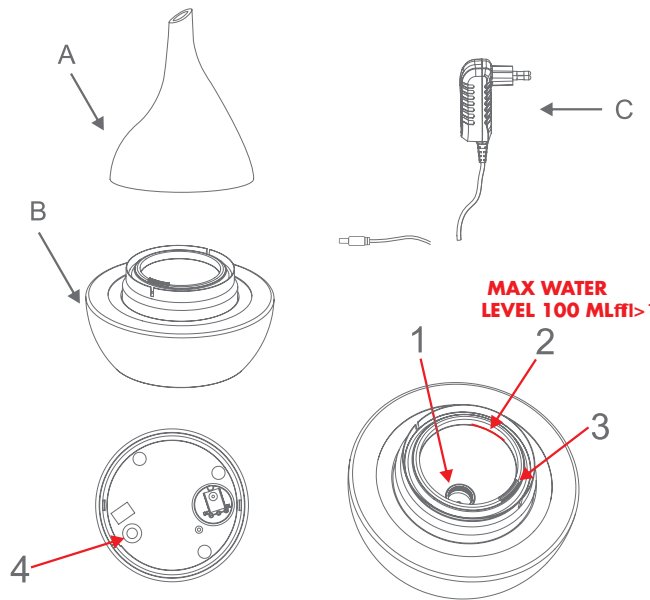
A. ; B D

B. J1; <14>1 (>14?2I `>1 F?4E)

C. 141@DB

- 1. CERAMIC DISC
- 2. MAX WATER LEVEL
- 3. AIR-VENT
- 4. BUTTON

Pressing Time	Mist	Light
①	On	Changing
Once	On	Color choose
Twice	On	Color choose
Three times	Off	Off

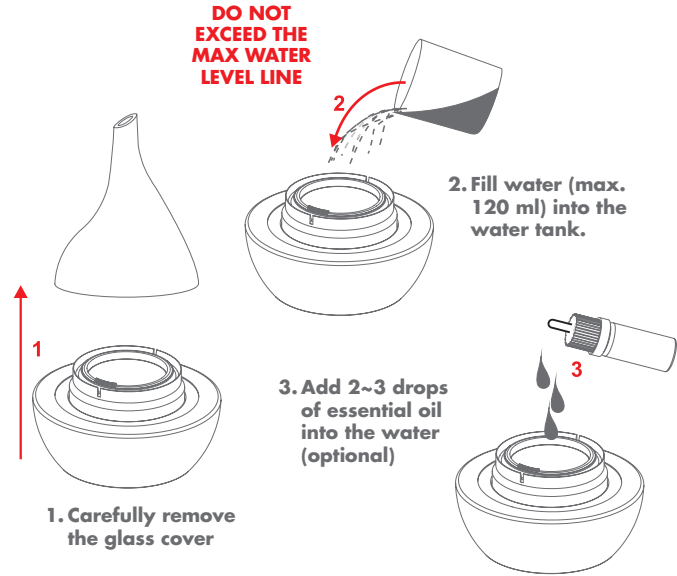


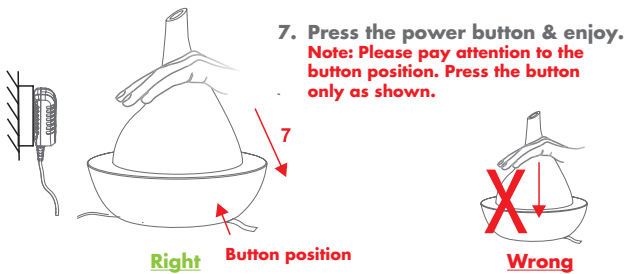
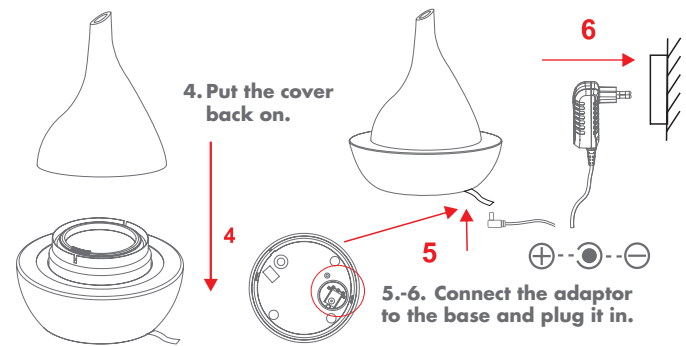


## INSTALLATION

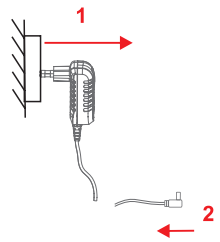
### Important Notes Before Use:

- A. Place the unit on an even surface, it's suggested to pour on tap water, pure water or mineral water in normal temperature. Corrosive liquid is not suitable to pour into this unit.
- B. Fill water (120 ml) into the water tank.
- C. Water-soluble essential oil is recommended. Please contact your local dealer for further information.
- D. When the product is tripped during operation, liquid may then flow into the internal space of the unit. Unplug the power and empty all water, keep the unit standing still in a ventilated place for 3 days. If there's anything wrong when you reuse, contact your local dealer for help.

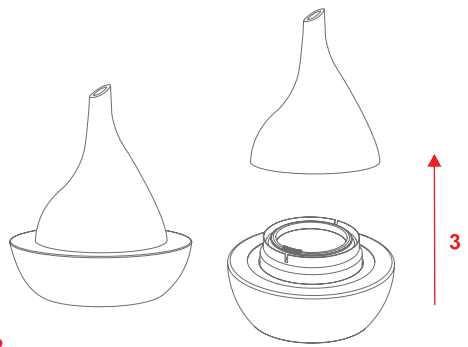




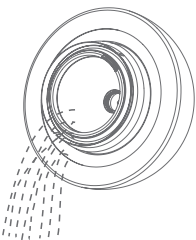
# MAINTENANCE



1.-2. Turn off the unit and then pull out the plug

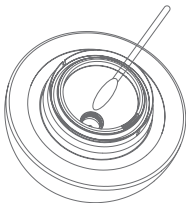


3. Take the cover off.



4. Empty water from the back side and avoid water flowing into the air-vent.

5. Use a clean swab or cloth to clean the unit (at least once per 3 days suggested).



6. Keep it clean and dry if you don't use it for a long time.



## TROUBLESHOOTING

Symptom	Possible Cause	Solution
<b>No Mist</b>	Power supply is not connected	Plug the power and press the power button.
	Insufficient water	Fill enough water
	Overfill water (exceed 120 ml)	Pour away the redundant water
	The cover is blocked by water drops or sundries	Clean with a swab & keep the exit being ventilated
	The ceramic disc is aging after running for approx 3.000 hours	Replace the ceramic disc

# WARNING

1. Do not lean the aroma diffuser during operation.
2.
  - This appliance is not intended for use by persons (including children) with reduced physical, sensory or mental capabilities, or lack of experience and knowledge, unless they have been given supervision or instruction concerning use of the appliance by a person responsible for their safety...
  - Children should be supervised to ensure that they do not play with the appliance.
  - Unplug the appliance during filling and cleaning.
3. Do not empty water from the side where the air-vent is located.

